

# Pandemic EBT

STUDENT EXCEPTION ANNOUNCEMENT TRAINING GUIDE FOR  
MICHIGAN SCHOOLS

# The School Survey was Completed, What's Next?

For any month(s) a school building was reported as:

- Primarily Remote – parent or guardian **will** be sent a notice regarding full benefit amount
- Primarily Hybrid – parent or guardian **will** be sent a notice regarding reduced benefit amount

**These months are all set!**

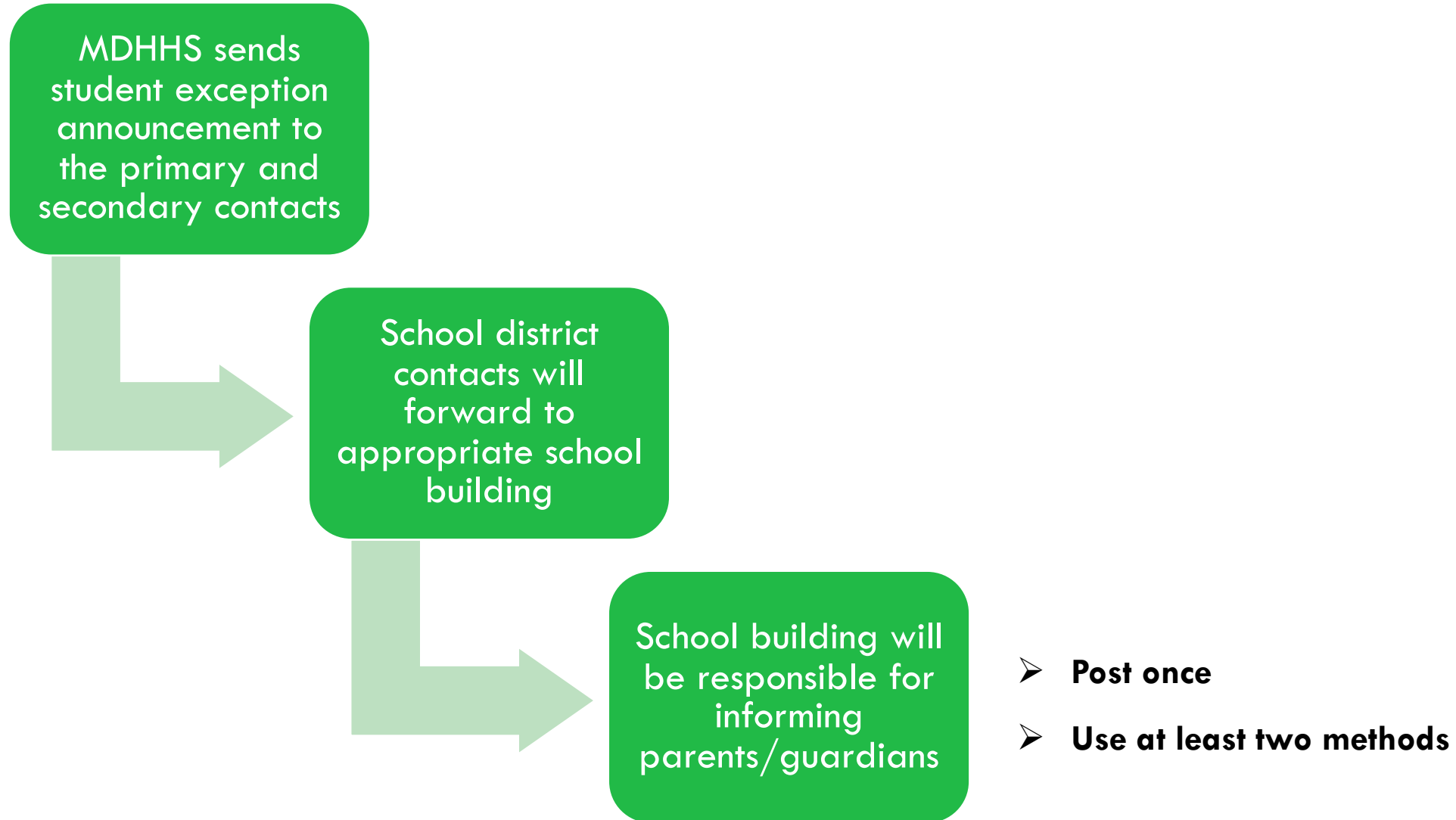
# The School Survey was completed, What's Next?

For any month(s) a school building was reported as:

- Primarily in-person –
  - No benefits are issued
  - No notice is sent to the parent from MDHHS
  - Additional steps are needed

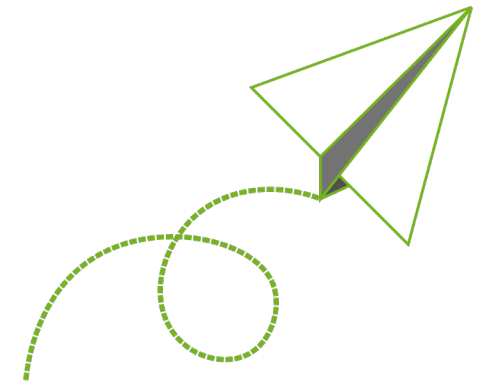
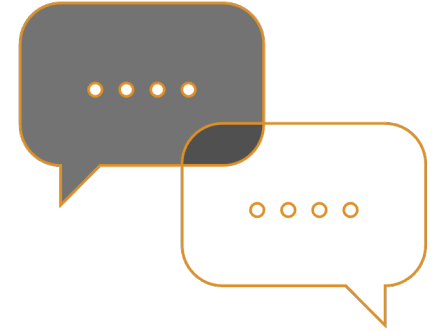
# Additional Steps

When a school building reported any month as primarily in-person:



# Suggested Notification Methods

Website	Post the entire message on the building homepage
Facebook	Share on your Facebook page
Twitter	Post on your Twitter page
Building Newsletters	Send information via your E-newsletter
Parent Notification System	Send an e-mail to all building parents or robocall
Printed postcard/flyer	Distribute to parents
Building Posting	Post on entrance doors

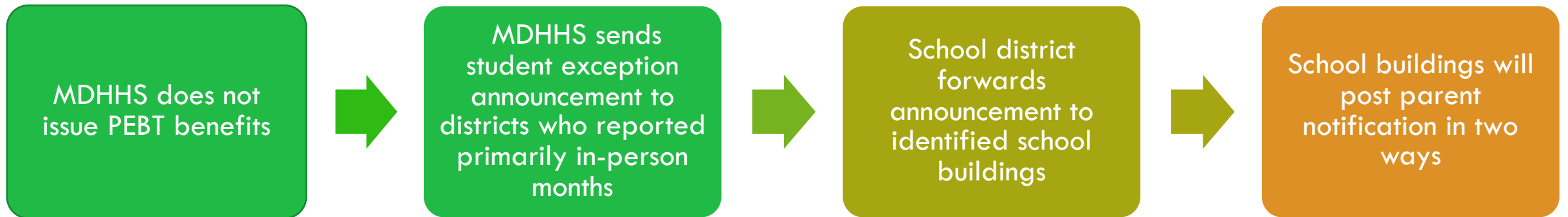


# P-EBT Student Exception Announcement Activities

For months that a school reported primarily in-person, a parent/guardian has the option to request an individual review of their student's circumstances. This process is called a reconsideration.

Example - Building began the 2022/2023 school year on Sept 7 with fully in-person learning. With news of COVID 19 cases increasing, one student opted to learn fully remote beginning Sept 17:

- Building reports primarily in-person modality for September



# Pandemic EBT



Important information for parents or guardians of student's eligible for Free and Reduced Lunch at Kenwood Elementary School.

### What is the Pandemic-EBT Program?

The Pandemic-EBT (P-EBT) Program provides food benefits to families with children who were not able to get free or reduced-price school meals due to COVID. You may hear about this benefit from other schools or in the media.

### Who is eligible?

Being eligible for this program will depend on what school your student attends. Eligibility for the Pandemic-EBT (P-EBT) Program can be different between schools within the same district.

### What makes a school eligible for P-EBT?

A school building is eligible only if the building has had 5 school days in a row of reduced in-person hours due to COVID (closures due to staffing shortages do not count for P-EBT benefits).

### What could make my child eligible for P-EBT?

- 1) If the school they attend is eligible for P-EBT **and**
- 2) If your student has applied and been approved for free/reduced lunch **and**
- 3) Did not receive instruction in-person for some or all the month due to COVID-19 related absence

There may be months when your student's attendance was different from what the school reported. In that case, you may be able to have your student's benefit level reconsidered. Your request to be reconsidered must be submitted by June 30, 2023. In the month(s) below your school reported primarily in-person. Your student(s) may be P-EBT eligible if your student did not receive instruction in-person for some or all the month due to COVID-19 related absence in the following month(s):

September 2022, October 2022, November 2022, December 2022

For more information, visit [WWW.MICHIGAN.GOV/PEBT](http://WWW.MICHIGAN.GOV/PEBT) or call 1-833-905-0028.



## Sample Student Exception Announcement

There may be months when your student's attendance was different from what the school reported. In that case, you may be able to have your student's benefit level reconsidered. Your request to be reconsidered must be submitted by June 30, 2023. In the month(s) below your school reported primarily in-person. Your student(s) may be P-EBT eligible if your student did not receive instruction in-person for some or all the month due to COVID-19 related absence in the following month(s):

September 2022, October 2022, November 2022, and December 2022

Note: Notice is only sent to parent/guardian once for each issuance period. Specific months the student can request reconsideration will be at the bottom of the notice.

# Guiding parents/guardians

## When should a parent or guardian request reconsideration?

If they have a free/reduced lunch student who attended class partially or fully virtual in a month shown on their notice due to a Covid-19 related absence

## What information will a parent or guardian need from the school?

A parent or guardian will need to provide proof that shows how their student received instruction for the month(s) and number of days on the notice. Schools can fill out section three of the reconsideration form to meet this requirement. If schools elect to provide a separate document, it will need to contain the following information:

- Student's name
- The month(s) for which the parent is requesting a reconsideration
- The date the student was approved for free or reduced lunches
- A statement about how the student received instruction for that month
- Name of the school employee filling out the document
- The school employee's title, e-mail, or telephone number
- Can be completed by teacher, aide, secretary, counselor

## Where can a parent or guardian find the form for a reconsideration?

The reconsideration form is at [www.michigan.gov/pebt](http://www.michigan.gov/pebt)



# Additional Resources

- More information can be found at [michigan.gov/pebt](https://michigan.gov/pebt)
- The website is frequently updated with new information
- Listed there are both parent and school resources, with FAQ documents, worksheets, the reconsideration form, and past training materials

The screenshot shows the MDHHS website with a navigation menu including: Assistance Programs, Adult & Children's Services, Safety & Injury Prevention, Keeping Michigan Healthy, Doing Business with MDHHS, and Inside MDHHS. The main content area is titled 'Pandemic-EBT (P-EBT)' and includes a sub-heading 'WHO IS ELIGIBLE?'. The text states: 'P-EBT provides supplemental food assistance benefits to students who have temporarily lost access to free or reduced-price school meals due to the COVID-19 pandemic. The goal of the program is to make sure no child goes hungry by missing out on school meals.' It also mentions that the Michigan Department of Health and Human Services (MDHHS) and Michigan Department of Education (MDE) partnered during the 2020-2021 school year to provide these critical benefits to over 900,000 students. The 'WHO IS ELIGIBLE?' section lists requirements for schools and students.

**Pandemic-EBT (P-EBT)**

P-EBT provides supplemental food assistance benefits to students who have temporarily lost access to free or reduced-price school meals due to the COVID-19 pandemic. The goal of the program is to make sure no child goes hungry by missing out on school meals.

The Michigan Department of Health and Human Services (MDHHS) and Michigan Department of Education (MDE) partnered during the 2020-2021 school year to provide these critical benefits to over 900,000 students. We are excited to be partnering again for the 2021-2022 school year to provide these benefits to students to help reduce food insecurity.

**WHO IS ELIGIBLE?**

The P-EBT program has specific eligibility requirements for both schools and students.

- Eligible **schools** must:
  - Be closed or have reduced in-person learning for at least 5 consecutive days in the current school year (beginning no earlier than September 7, 2021).
  - Be a provider of the National School Lunch Program and/or School Breakfast Program.
- Eligible **students** must:
  - Be enrolled in a Michigan school.
  - Did not receive instruction in-person for some or all the month due to COVID-19 related absence
  - Be eligible for free or reduced lunch or attend a Community Eligibility Provision school.

**PARENT RESOURCES**

**SCHOOL RESOURCES**

# Still have questions?

School administrators or the designated contact can email us at:

[MDHHS-PEBT@michigan.gov](mailto:MDHHS-PEBT@michigan.gov)

This presentation and other reference materials are available at:

[www.michigan.gov/pebt](http://www.michigan.gov/pebt)